

GPS CUP

www.gpscup.com

The scope

- ▶ You can compete from your home airfield
- ▶ You can compete within a given timeframe anytime (for example 2 weeks)
- ▶ You can wait for good weather condition, you can fly even on weekdays
- ▶ Easy to understand the rules
- ▶ You can fly with basic skills
- ▶ No photo searching, as it is not possible

What do we need to start?

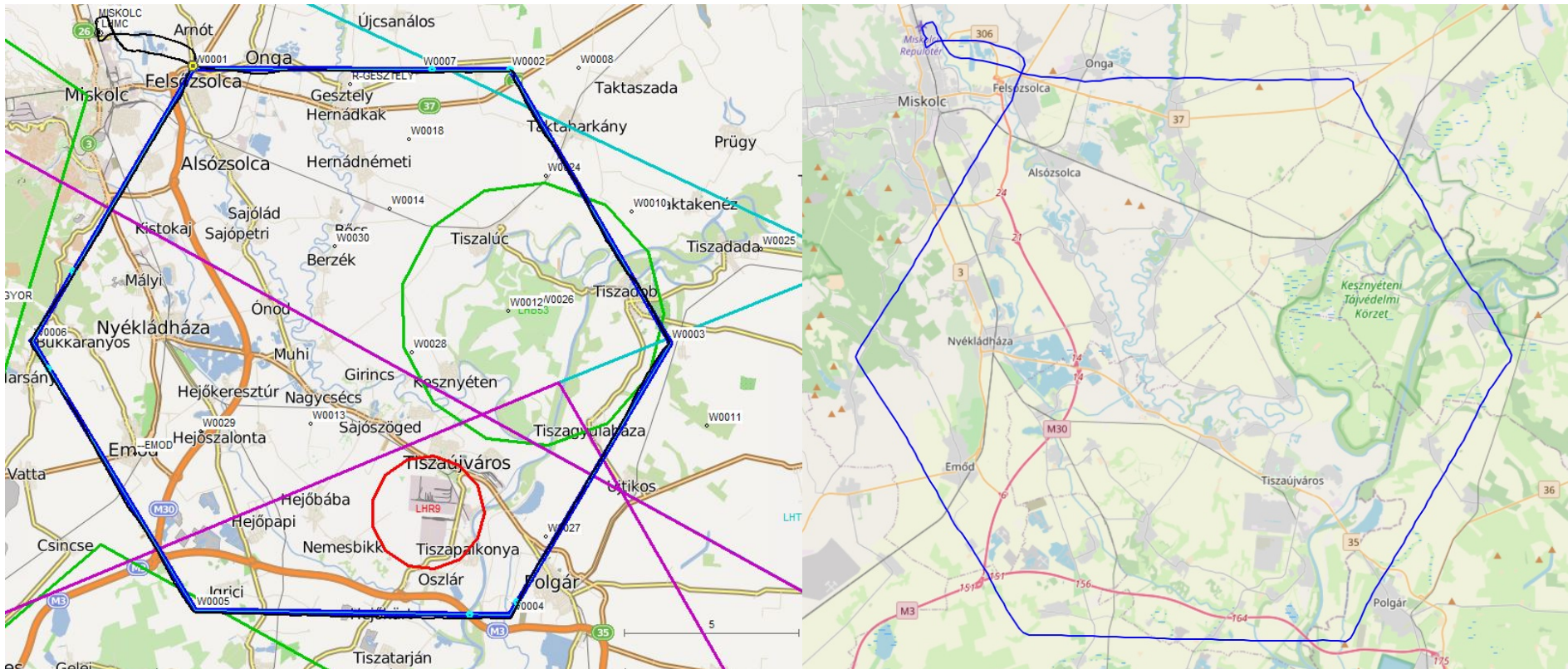
- ▶ Register at www.gpscup.com
- ▶ Any kind of logger
- ▶ A GPS
- ▶ A microlight aircraft

How does a task look like, what shall we do before flying?

- ▶ You download the task from the webpage
- ▶ It is for example a triangle about 80 km, you draw it in google earth or any software you like, which can handle coordinates
- ▶ You upload the coordinates and your speed to the webpage, wait 24 hours, and can start to fly the task
- ▶ You can change your predicted ground speed up to 1 hour before Takeoff
- ▶ You load the coordinates and route into your preferable GPS device

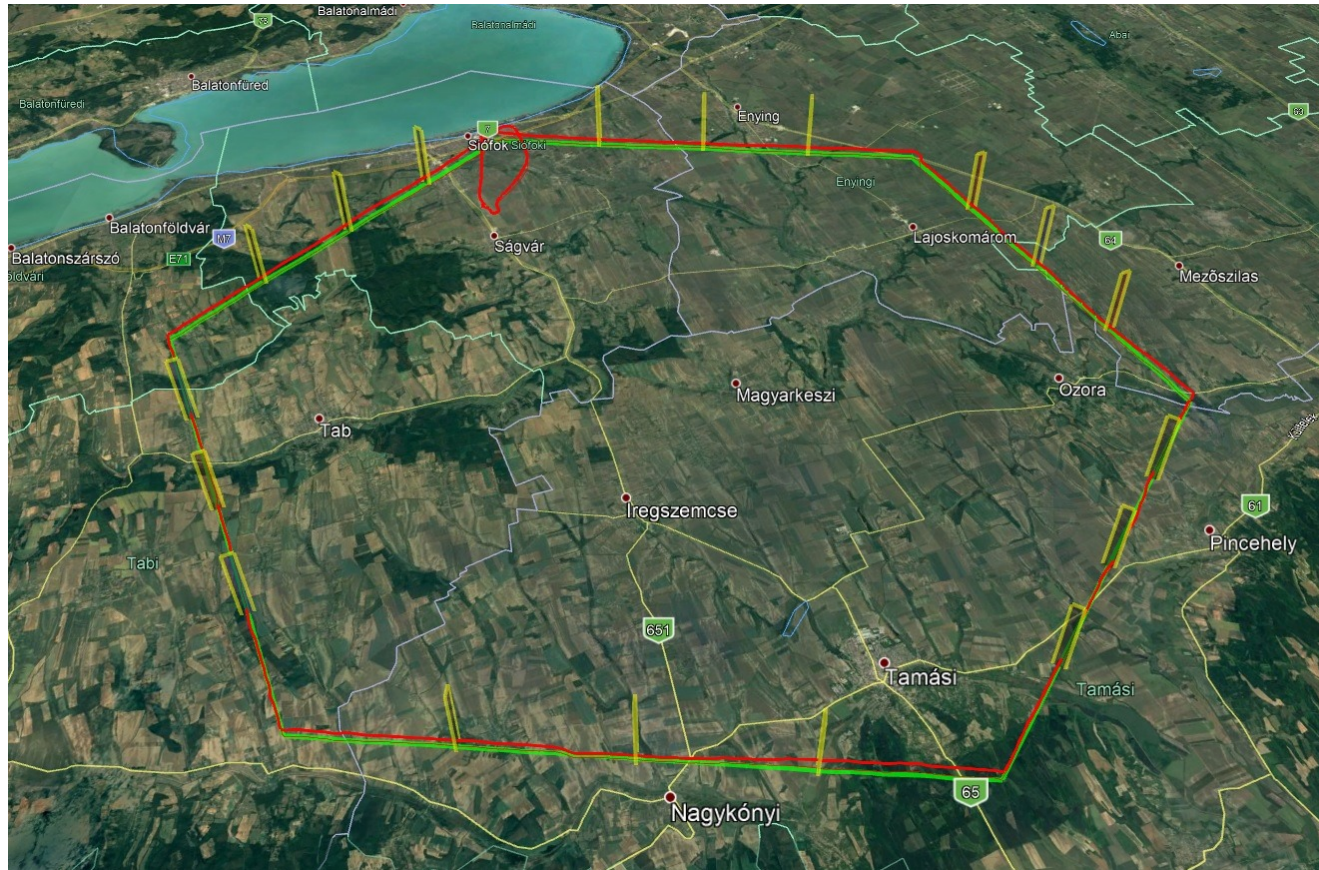
The flight

- ▶ You can start anytime
- ▶ You try to fly over your defined route as precise as possible, and maintain your predicted ground speed.
- ▶ Upload the log file to the webpage within 24 hours after the landing



Hidden gates

- ▶ The scoring software will put certain number of hidden gates at random location at you route.

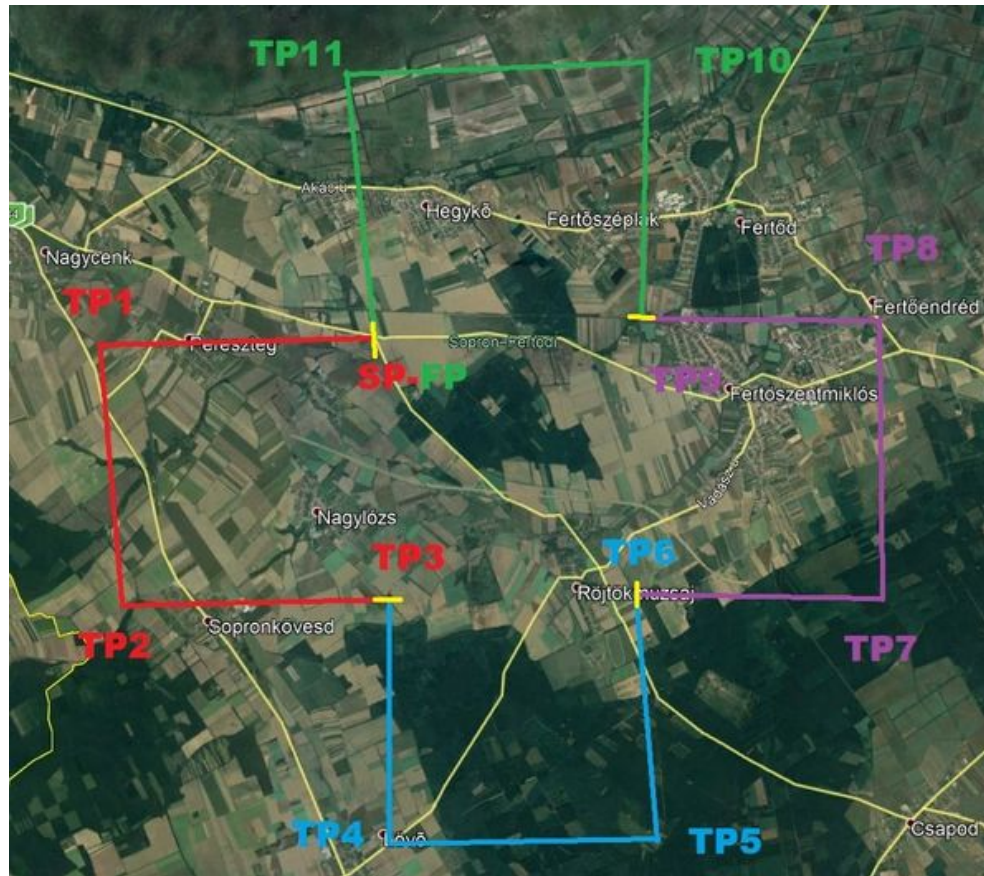


Scoring / Hidden gates

- ▶ The score is calculated by using timegates and crossing gates.
- ▶ Score for timegates as usual, 100 scores max, and reduced by the difference
- ▶ Scoring for crossing gates is calculated of the distance from the center of the gate, max 100 scores
- ▶ The best pilot gets 1000 scores in the category in each task
- ▶ 2 or 3 tasks per Championship
- ▶ There are no hidden gates 800 meters before and after the turnpoint
- ▶ Width of the gates are defined in the task description

Time calculation

- ▶ Time is restarting after certain number of legs, so the mistake is not accumulated at the whole route
- ▶ Time starting gates are perpendicular to the next leg, and are located at the startpoint of the leg (marked yellow)



- ▶ This is how a map looks like with all tracklogs displayed at the end of the competition



Thank you for your attention ! 😊

- ▶ Any question, please visit www.gpscup.com
- ▶ Still some more question: mail to dolhai@freemail.hu
- ▶ Any ideas are welcome to populate / improve this competition ;)